

xerox



Business  
Printing  
Innovation  
Never  
Stops



We understand that every business in every industry is unique – with unique document needs, processes, and regulatory requirements. If you are looking to reduce costs, consolidate assets, reduce the amount of floor space occupied by copiers, printers & Scanners, and improve work flow & productivity in your work place, Our award-winning range of Xerox Printers and Multifunction Devices (MFD's) will meet your needs.



CAD

REPROGRAPHICS LLC

Channel Partner of

xerox



## Award winning Office Printers



### Phaser 3260 Monochrome Laser Printer

Up to 29 pages/min  
600 x 600 dpi resolution  
Built-in Wi-Fi  
[Better Buys for Business Editor's Choice](#) Award Winner

### Phaser 3610 Monochrome Laser Printer

Up to 47 pages/min black and white  
1200 x 1200 dpi resolution  
Optional wireless adapter  
Edge-to-edge printing



### Phaser 6500 Color Laser Printer

Prints up to 24 pages/min in color and black-and-white  
Network-ready, easy to instal  
Environmentally friendly Emulsion Aggregate (EA) toner  
Eligible for free lifetime service coverage with [Xerox eConcierge](#)  
[PC Magazine Editors' Choice](#) Award Winner

### Phaser 6510 Color LED Printer

Up to 30 pages/min color and black-and-white  
Up to 1200 x 2400 dpi image quality  
Built-in Wi-Fi® connectivity (DNI configuration)  
Standard 300-sheet paper capacity



### Phaser 6700 Color Laser Printer

Print up to 47 pages per minute  
True 2400 x 1200 dpi print resolution  
Optional 160 GB hard drive  
Help videos and Color By Words



## Office Multifunction A4 Printers

High-quality printing  
productive  
efficient multi-tasking



### WorkCentre 4265 Monochrome All-in-One Printer

Up to 55 pages/min  
Print/copy and scanning capability  
Monthly duty cycle of up to 250,000 pages  
Single pass, 2-sided scanning  
7 inch capacitive touch screen



### VersaLink B405 Monochrome All-in-One Printer

Up to 47 pages/min black-and-white  
Print/copy and scanning capability  
Customizable, capacitive 5-inch color touchscreen  
Up to 1200 x 1200 dpi (enhanced)  
Automatic two-sided output

#### INTRODUCING TOUCHSCREEN SUPERIORITY.

Meet our tiltable, 5-inch capacitive color touchscreen—the user interface that sets a higher standard for customization, personalization and versatility.

By presenting a familiar “mobile” experience—with support for gestural input and task-focused apps that share a common look and feel—fewer steps are needed to complete even the most complex jobs.

A highly intuitive layout guides you through every task from start to finish, with a natural hierarchy placing critical functions near the top of the screen and commonly used options front and center. Don't like where a function or app is located? Customize the layout to make it yours.

This unmatched balance of hardware technology and software capability helps everyone who interacts with the VersaLink B400 Printer or VersaLink B405 Multifunction Printer get more work done, faster.





**WorkCentre 3315/3325  
Monochrome All-in-One Printer**

Up to 37 pages per minute  
Print/copy and scanning capability  
Up to 1200 x 1200 image quality  
Standard automatic 2-sided (duplex) printing

**WorkCentre 6515  
Color LED All-in-One Printer**

Up to 30 pages/min color and black-and-white  
Print/copy and scanning capability  
Up to 1200 x 2400 dpi image quality  
5" Color touchscreen interface  
Built-in Wi-Fi® connectivity (DNI configuration)



**VersaLink C405  
Color Laser All-in-One Printer**

Up to 36 pages/minute in color and black-and-white  
Print/copy and scanning capability  
Customizable, capacitive 5-inch color touchscreen  
Up to 600 x 600 x 8 dpi  
Single-pass 2-sided scanning





Meet today's tasks, build tomorrow's opportunities.

## Office Multifunction A3 Printers

Looking for ways to accelerate your office productivity and work more efficiently through multifunction printer that is right fit for your critical business demands?



Security



### WorkCentre 7220i/7225i

Up to 25 pages per minute  
Xerox® ConnectKey® Technology  
i-Series Smart MFP  
Colour MFP with support for A3  
Copy, print, scan, fax, email



### Altalink C8035/ C8045/ C 8055

Up to 35/45/55 pages per minute  
Copy, print, scan, fax, email,  
built in mobile connectivity  
Powerful and scalable for simple  
to the most demanding office applications  
Xerox® ConnectKey® Technology enabled  
smart Workplace Assistant  
Colour MFP with support for A3  
Ideal for mid to large workgroups



### Xerox® AltaLink® B8045 / B8055 / B8065 / B8075 / B8090 - Monochrome A3 Multifunction Printer

up to 45 / 55 / 65 / 75 / 90 pages per minute  
Xerox® ConnectKey® Technology enabled smart Workplace Assistant  
Black-and-white MFP with support for Tabloid/A3  
Copy, print, scan, fax, email and built in mobile connectivity  
The fleet-ready, black-and-white workflow accelerator with built-in mobile connectivity  
Ideal for mid to large workgroups  
10" colour, customisable tablet-like user interface

## Comprehensive security for complete data protection.

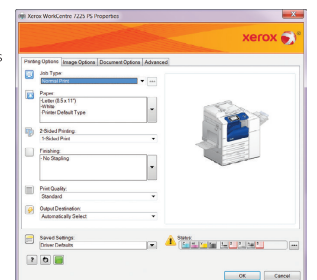
ConnectKey Technology provides advanced features and technologies to help ensure your company's confidential information stays secure. Our standard security features include AES 256-bit hard disk encryption, McAfee® protection powered by Intel Security, image overwrite, secure print with timed deletion and emailing to external mail servers.

### Keep your costs under control

With the WorkCentre 7220i/7225i, you'll impact your bottom line – and impress your customers – with color that's as bold as it is affordable.

- **Customize your print driver settings for economy and efficiency.** For example, choose N-up for printing multiple pages on a single sheet as your default. Adjust settings for specific applications, such as always printing emails in black-and-white.
- **Print responsibly.** By default, our print driver is set to two-sided printing, and the Earth Smart feature allows you to select other default settings that encourage responsible usage, such as no printing banner pages.

- **Easy, accurate billing;** The WorkCentre 7220i/7225i has the ability to connect to the network to automatically submit meter readings so that toner replenishment can be streamlined to enable more productivity.
- **Manage and track device usage.** Xerox® Standard Accounting provides reports for greater cost control of all device functions. Advanced solutions from Xerox Business Innovation Partners deliver even more helpful tools for larger office environments.
- **Earth-smart printing.** Our innovative Earth Smart feature allows you to choose the most environmentally sensitive options for your print jobs.



## Production Printers and Copiers

The print industry continues its rapid transformation, fueled by shorter run lengths, increased personalisation, faster turnarounds and demanding quality.

50 trillion pages are produced worldwide today using production print technology, only 2% of which are printed digitally. The opportunity for digital print is unmistakable, as digitally-printed pages are projected to grow at a 7% CAGR from 2012 to 2016.<sup>1</sup>

Xerox solutions help address all your digital printing services and multi-channel communication needs as you look to navigate a changing market to lead and delight your customers. Whether you're just getting started in digital print or are looking to transform your successful business into something more, Xerox is committed to help.

### Xerox® Colour C60/C70 Printer

Up to 70 ppm colour, 75 ppm black  
Print, Copy, Scan, Preview, Email  
Xerox® Integrated Colour Server  
Xerox® EX-i C60/C70 Print Server Powered by Fiery®  
Xerox® FreeFlow Print Server Integrated for  
the Xerox® Colour C60/C70 Printer  
Xerox® EX C60/C70 Print Server Powered by Fiery®  
Coated and uncoated stock, up to 300 g/m



### Xerox® Versant® 80 Press

80 ppm  
Print, Copy, Scan, Preview, Email  
Xerox® Integrated Colour Server  
Xerox® EX 80 Print Server Powered by Fiery®  
Xerox® EX-i 80 Print Server Powered by Fiery®  
Xerox® FreeFlow® Versant 80 Print Server  
Coated, uncoated, tabs, envelopes, polyester/synthetic,  
textured, colored, custom media and mixed-stock printing,  
up to 350 g/m



## Xerox® iGen® 5 Press

iGen® 5 150: 150 PPM

Print, Copy, Scan, Preview, Email

CMYK plus optional orange, green, blue or clear

Xerox FreeFlow™ Print Server

Xerox® EX-P 5 Print Server, Powered by Fiery®

Coated, uncoated, textured, specialty stocks

Recycled, perforated, tabs, transparencies, a wide variety of labels, synthetics, DocuCard®, Never Tear, DuraPaper®, UltraMagnet, DocuMagnet up to 350 g/m



## Inkjet Press

197 A4 images per minute

Print, Copy, Scan, Preview, Email

Production inkjet colour printing (optional K-only mode)

Xerox® FreeFlow® Print Server

Uncoated, untreated and uncoated inkjet treated paper stocks up to 220 g/m



# xerox



## Contact us

### Mr. Venkat Ramani

Accounts Manager

Abu Dhabi, Defence Road  
M1 Al Sada Bakery Buliding  
PO.Box 26148  
+971 50 572 5804  
venkat@cadreprographics.com

### Ms. Sheryl Ebreo

Account Manager

+971 50 900 6550  
+971 4 361 4445  
sheryl@cadreprographics.com

 [www.cadreprographics.com](http://www.cadreprographics.com)

### Mr. Rajeshwara Rao

Accounts Manager

Dubai JLT: Shop No.R/1  
Lake View Tower  
Cluster B-(JLT)  
+971 50 541 0335  
rajesh@cadreprographics.com

